
TATHRA WHARF & HEADLAND PRECINCT PLAN

FINAL REPORT

**PLACE
LAB**

wsp

DECEMBER 2022

Acknowledgment of Country

The land on which we live and work is Aboriginal land. Aboriginal people have lived on the Australian continent for at least 65,000 years. Non-Aboriginal people have lived in Australia for just 230 years.

As a practice, we are working towards an understanding of that fact, and how it might inform our relationship to the land, its original people, and the work that we do. We acknowledge that we have a long way to go. Our studios are located on Gadigal, Ngunnawal and Whadjuk country in Sydney, Canberra and Perth respectively.



CLIENT
Bega Valley Shire Council

PROJECT TEAM

Project Lead | Civil | Traffic and Transport: WSP
Landscape Architecture: PLACE Laboratory
Quantity Surveyor: Alex Feng

DOCUMENT CONTROL

Revision	Description	Date of Issue
A	DRAFT ISSUE FOR REVIEW	22.11.21
B	DRAFT RE-ISSUE FOR REVIEW	23.11.21
C	ISSUE FOR INFORMATION	01.12.21
D	DRAFT PRECINCT PLAN	13.12.21
E	DRAFT PRECINCT PLAN	14.12.21
G	OPTIONS FOR PUBLIC COMMENTS	16.05.22
H	REVISED OPTIONS FOR PUBLIC COMMENT	03.06.22
H	DRAFT PRECINCT PLAN	18.06.22
I	REVISED DRAFT PRECINCT PLAN	05.07.22
J	ISSUE TO COUNCIL	29.07.22
K	ISSUE TO COUNCIL	01.08.22
L	FINAL	21.12.22

CONTENTS

PROJECT BACKGROUND	4
PRECINCT OBJECTIVES	5
PRECINCT THEMES	6
OVERALL PLAN	8
OVERALL PLAN	9
UPDATES TO ROAD NETWORK	10
PEDESTRIAN NETWORK	12
PARKING MAP	13
WAYFINDING	14
PEDESTRIAN NETWORK	14
STORMWATER	15
SOUTH BEGA STREET	16
SERVICE LANE	17
HEADLAND	19
HEADLAND PARK	20
WHARF	22
MATERIAL PALETTE	24
PLANTING PALETTE	25
TYPICAL SECTIONS	27

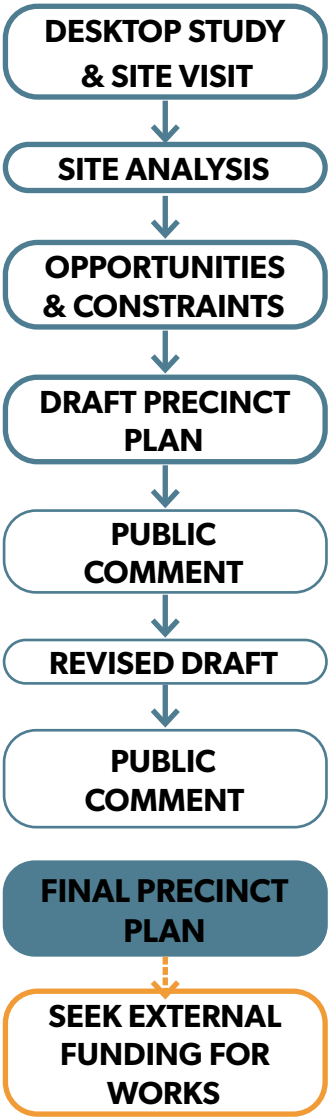


PROJECT BACKGROUND

Under the NSW Government’s COVID-19 stimulus program, Bega Valley Shire Council was awarded \$7.81 million to undertake urgent essential upgrades and repairs including replacement of piers and building upgrades and repairs, car parking and amenity upgrades at Tathra Wharf. Part of this grant is being used to develop a Precinct Plan to guide the development of the Wharf and headland and strategically improve its public amenity into the future.

The plans enclosed seek to establish an aspirational design language for the Tathra Headland Precinct. The drawings showcase ways of celebrating this towns existing rugged surrounds, gentle pace of life with increased amenity, access and opportunities to engage in its cultural legacy and community.

PROJECT PROCESS



COMMUNITY CONSULTATION

The project process included two rounds of community consultation.

Round 1 was undertaken between December 2021 to February 2022 seeking community feedback on the draft precinct plan.

There was divided support for the draft precinct plan, with 42% showing no support, 34% showing support in part, and 24% supportive of the plan in its entirety. The key themes raised by the community were to:

- Retain parking on Wharf Road.
- Consider how the headland will link to lower Tathra, and
- Maintain the headland’s informality and coastal charm.

A revised draft precinct plan was prepared based on the community feedback. The scaled-back plan improved pedestrian movement by providing a shared path, road crossings, and wayfinding. Wharf Road remained open to cars. Parking was retained along one side – allowing the other side closest to the ocean views to act as a shared zone for cars and pedestrians. The intersections at Cliff Place, Bega Street, and Wharf Road were improved. The parking lot was removed, enhancing the visual amenity and improving the junction between Service Lane and Bega Street. Parking along Bega Street was connected to a shared pathway connecting people to destinations easily. Accessible parking spots were placed at the wharf, memorial park, Tathra Hotel, and Beach Street shops and linked directly to the path network

Round 2 public consultation was undertaken between 5 August to 18 September 2022 seeking community feedback on the revised draft precinct plan. An options study for a walkway from lower to upper Tathra was released in conjunction with the revised draft precinct plan.

The consultation included a short survey provided on Council’s Have Your Say webpage . The Have Your Say also allowed people to provide feedback on whether they supported the revised precinct plan, walkway options, and why.

26 submissions were received via survey and 14 submissions were received via email.

The community showed strong support for the revised precinct plan with 50% supportive of the plan in its entirety, 42% showing support in part, and only 8% showing no support.



PRECINCT OBJECTIVES

Place Laboratory and WSP conducted a series of facilitated virtual workshops with a range of internal, external and agency stakeholders. Their feedback was used to inform this Draft Precinct Plan. A Stakeholder Consultation Summary provides an overview of the engagement outcomes and can be found on the Bega Valley Shire Council website.

The focus of the engagement was to seek feedback and to explore how WSP and Place Laboratory could best meet the four guiding design objectives:



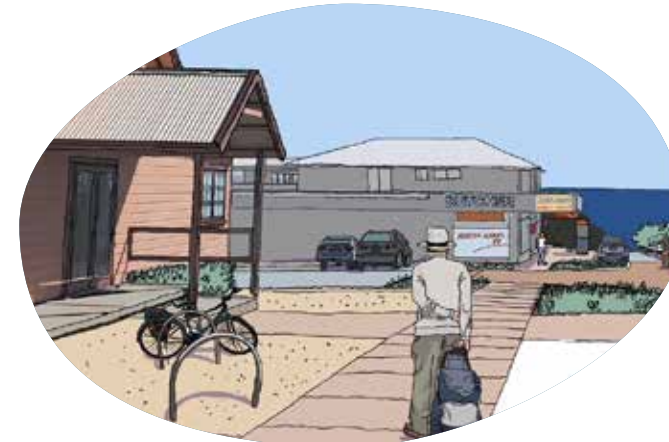
1. Improve active travel links to create a cycle friendly, walkable and safe precinct.

- Slowing the pace down keeps Tathra as a holiday destination, people can take time to enjoy the environment
- Different users and people of varied abilities are accommodated for in getting between key destinations. A great walkable experience brings returning visitors



2. Improve functionality of traffic circulation and car-parking to create more efficient use of space

- Improves safety around car parking areas for all users
- Creating an easy journey means people enjoy their time more
- Reduces traffic congestion in summer months, and services the locals in the winter months.
- Moves large car parking areas away from picturesque views and returns space to the pedestrians and visitors.



3. Improve the visual amenity and viewing corridors to enhance the natural landscape of the headland.

- Improves upon the already beautiful views and natural character
- This is an opportunity to upgrade the headland infrastructure and provide new amenities
- Improves tourist attraction power
- Reducing visual clutter increases safety and improves enjoyability



4. Improve way-finding and connectivity to enhance visitor experience while visiting iconic destinations.

- People stay longer in spaces designed to host activities
- Revealing the destinations using easy to understand wayfinding.
- Recognising the local experience against the visitor experience (local needs/visitor needs)
- Bringing the stories of the town to life by providing interpretation that responds to all users
- Ensure hierarchy of access routes are logical and terminate safely for pedestrians, such that travel is easy, safe and enjoyable.

PRECINCT THEMES

Through community and stakeholder workshops and engagement, the themes for the Tathra Headland and Wharf Precinct Plans were envisioned. These were tested within the community and resounded well with what the locals aspire for the place.

WILD

- The precinct is a place shaped by its harsh coastal environment, as well as being touched by bush-fires and strong waves.
- The Tathra headland is seen as an adventurous place.
- The landscape is classic coastal as it's not manicured and petite, it's wild!
- There is a strong community commitment to regenerate the bushland of the headland.



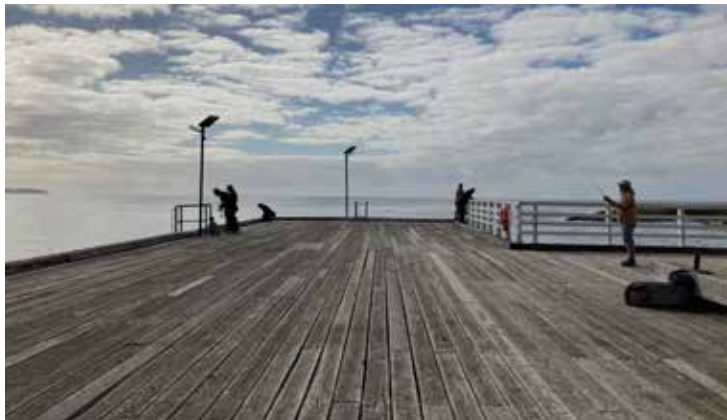
TOPSIDE AND BEACHSIDE

- The town is separated by the physical land form, and this creates a divide naturally.
- There is a strong feeling the connectivity needs to be addressed.
- Tathra headland and wharf precinct needs to be an asset that serves the needs of the whole town and the visitors it attracts.
- The topside is often seen as the place to go for adventure activities like the walks and night time food and beverage.



AUTHENTIC

- The materiality of Tathra speaks to its roots in marine history, with strong calls to timber, sandstone and gravel.
- Improved walking and cycling amenity with an accessibility focus will support the slow pace of the town .
-



SHARING STORIES

- Local stories are important and need to be shared. Tathra’s story is deep and rich, with the very creation of Tathra itself being core to this precinct.
- There is a great desire to better tell the indigenous stories of the town. This could be reflected by things like walking tours and events. Spaces need to be created to facilitate this.
- A cultural garden and yarning circle can be a place to share knowledge. This will strengthen the community’s bond and lead to an education growth within the community.

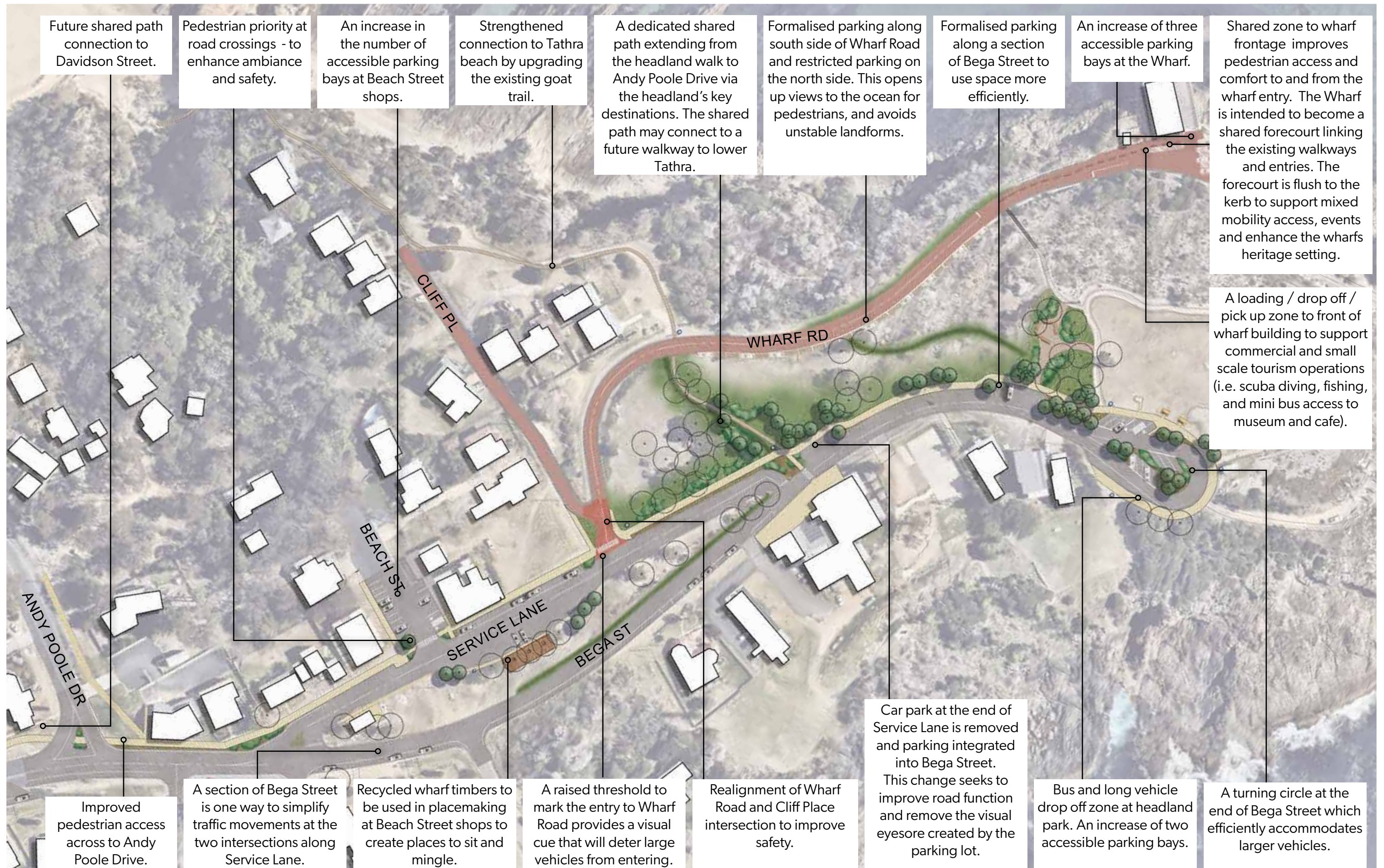


OVERALL PLAN



1. Bega Street south (refer to page 16 for detail)
2. Beach Street shops (refer to page 17 for detail)
3. Tathra hotel (refer to page 19 for detail)
4. Tathra memorial gardens and headland park (refer to page 20 for detail)
5. Wharf and wharf building (refer to page 22 for detail)

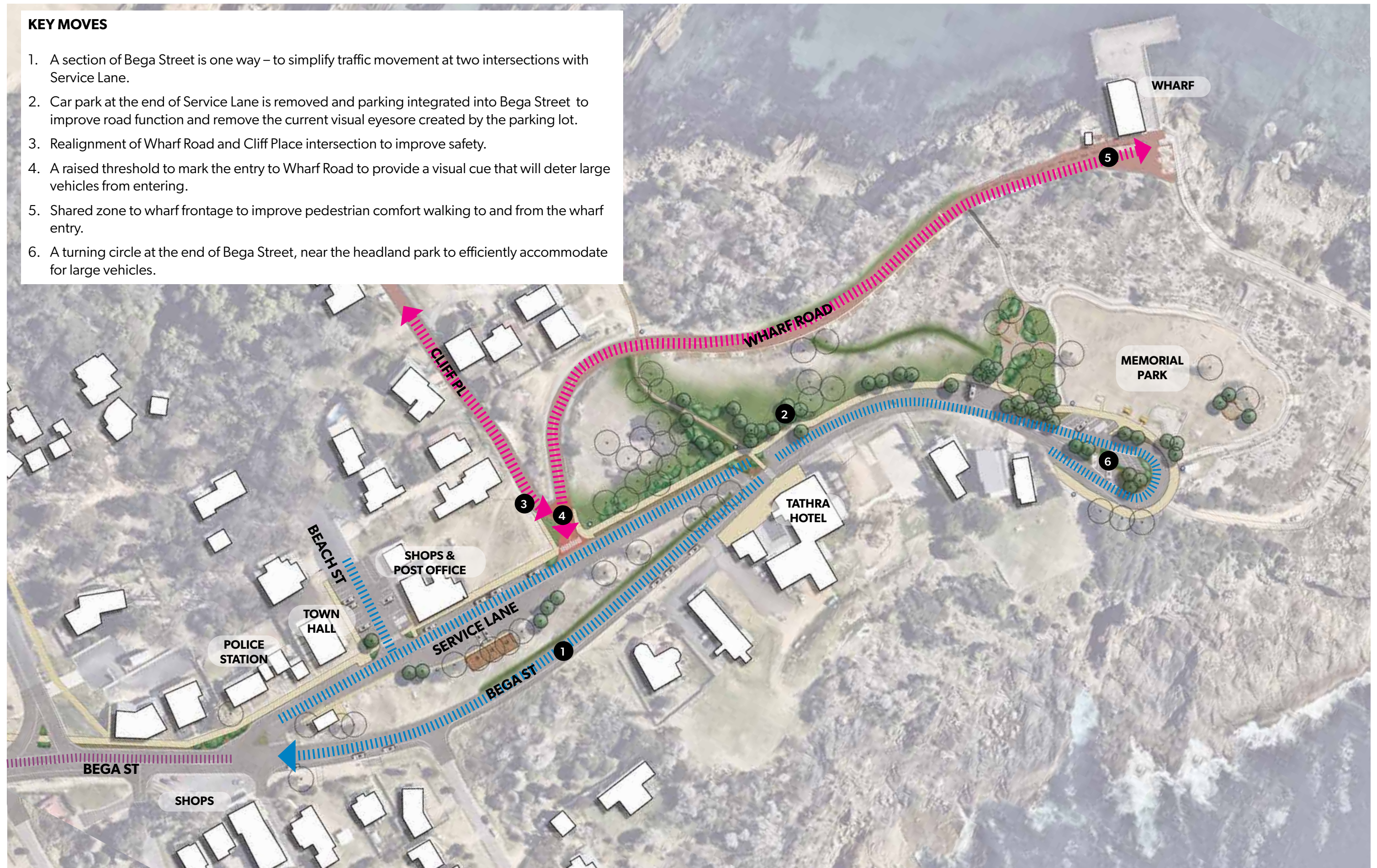
OVERALL PLAN



UPDATES TO ROAD NETWORK








KEY MOVES

1. A section of Bega Street is one way – to simplify traffic movement at two intersections with Service Lane.
2. Car park at the end of Service Lane is removed and parking integrated into Bega Street to improve road function and remove the current visual eyesore created by the parking lot.
3. Realignment of Wharf Road and Cliff Place intersection to improve safety.
4. A raised threshold to mark the entry to Wharf Road to provide a visual cue that will deter large vehicles from entering.
5. Shared zone to wharf frontage to improve pedestrian comfort walking to and from the wharf entry.
6. A turning circle at the end of Bega Street, near the headland park to efficiently accommodate for large vehicles.

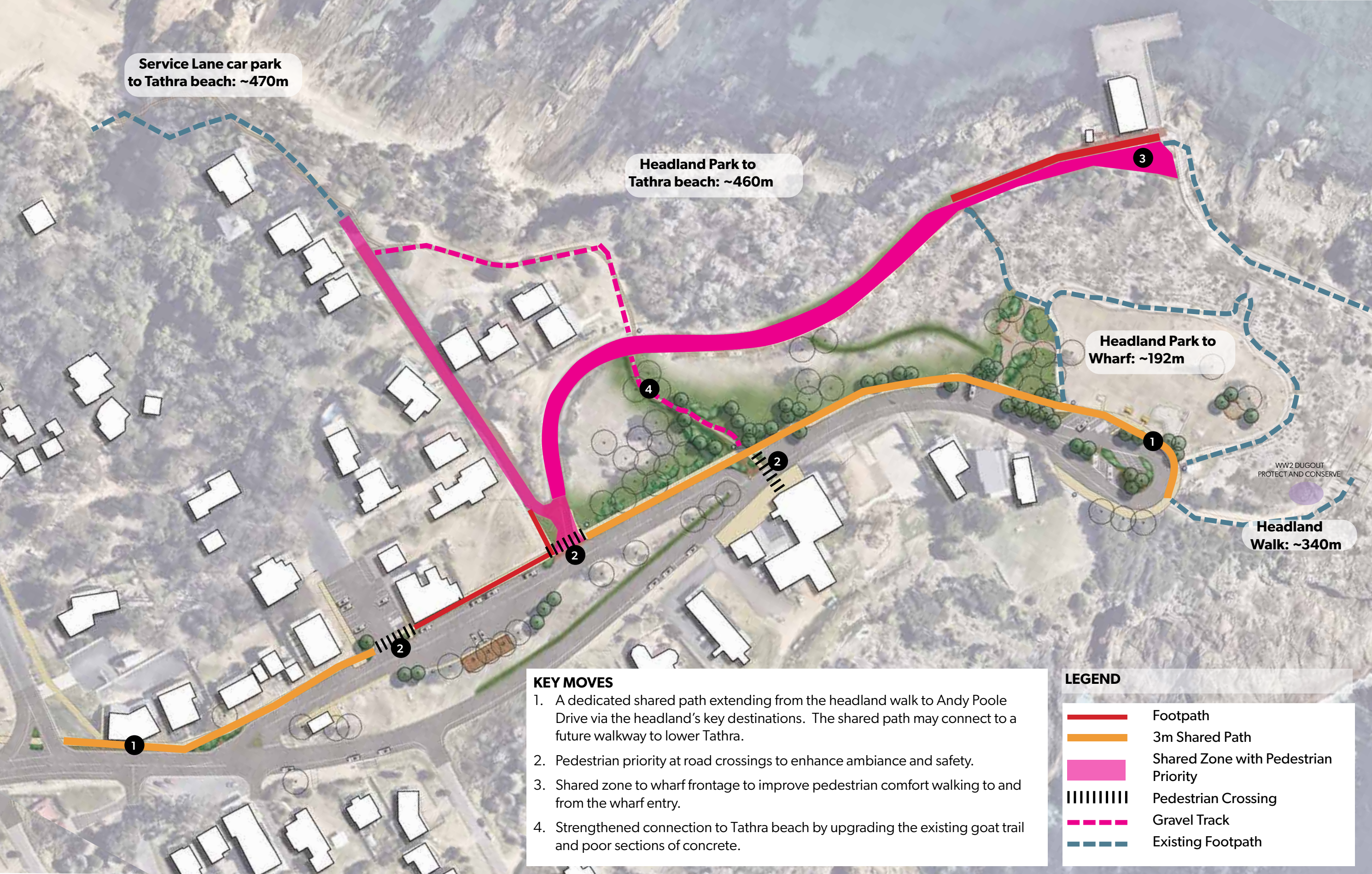


LEGEND

The optimal road characteristics based on the Bega Valley Shire Council Road Geometry Guide are:

OPTIMAL ROAD CHARACTERISTICS									
ROAD NAME	DESCRIPTION	ROAD TYPE	TRAFFIC VOLUME (VPD)	SPEED (KM/HR)	ROAD WIDTH (M)	PARKING PROVISIONS	KERB	FOOTPATH	VERGE WIDTH (M)
BEGA ST SOUTH	Two way 	Collector Street	3000	50	9	Carriageway Parking	Layback or barrier	1.2m on one side	3.5
BEGA ST CENTRAL	One way 	Local Street	1000	40	8	Carriageway Parking	Layback or flush with grassed swale	1.2m on one side	3.5
BEGA ST WEST	Two way 	Local Street	1000	40	8	Carriageway Parking	Layback or flush with grassed swale	1.2m on one side	3.5
SERVICE LANE	Two way 	Local Street	1000	40	8	Carriageway Parking	Layback or flush with grassed swale	1.2m on one side	3.5
BEACH STREET	Two way 	Local Street	150	25	6	Carriageway Parking	Layback or flush with grassed swale	1.2m on one side	4.5
WHARF ROAD	Shared Space 	Access Street	150	25	6	Embayments	Layback or flush with grassed swale	1.2m on one side	4.5
CLIFF PLACE	Shared Space 	Access Street	150	25	6	Carriageway Parking	Layback or flush with grassed swale	1.2m on one side	4.5

PEDESTRIAN NETWORK



PARKING MAP

KEY MOVES

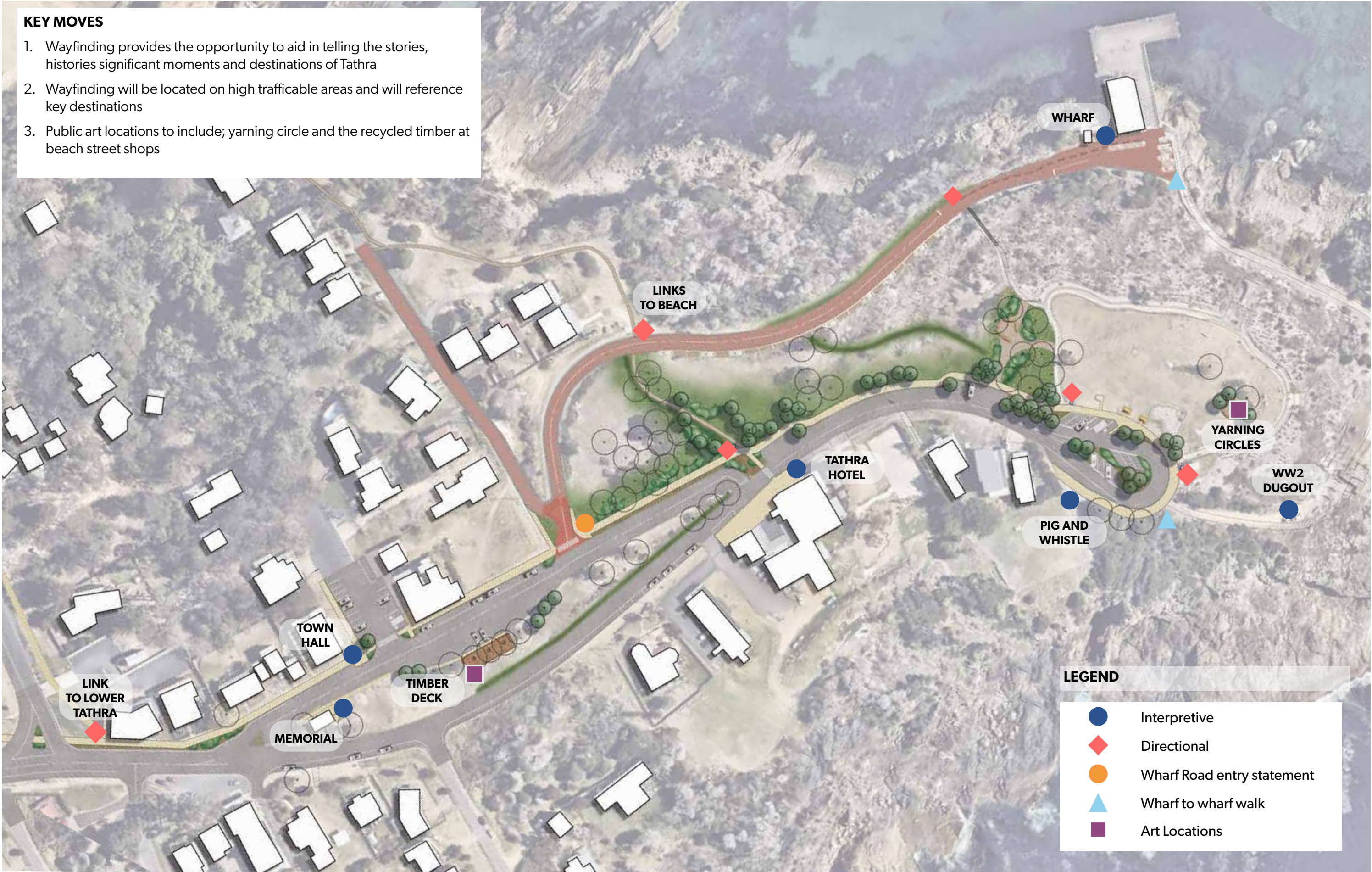
1. Formalised parking along south side of Wharf Road and restricted parking on the north side. This opens up views to the ocean for pedestrians, and avoids unstable landforms.
2. An increase in the number of accessible parking bays across the headland including at the wharf, headland park and Beach Street shops.
3. A drop off / pick up zone to front of wharf building to support commercial and tourism operations.
4. Removal of large asphalt car park to front of Tathra hotel – to improve visual impact and road functions.
5. Formalised parking along a section of Bega Street optimises the use of space more efficiently.
6. Bus and long vehicle drop off zone and parking at headland park
7. Vehicle drop off zone outside of the Tathra hotel.
8. Loading zone to service Beach Street shops.



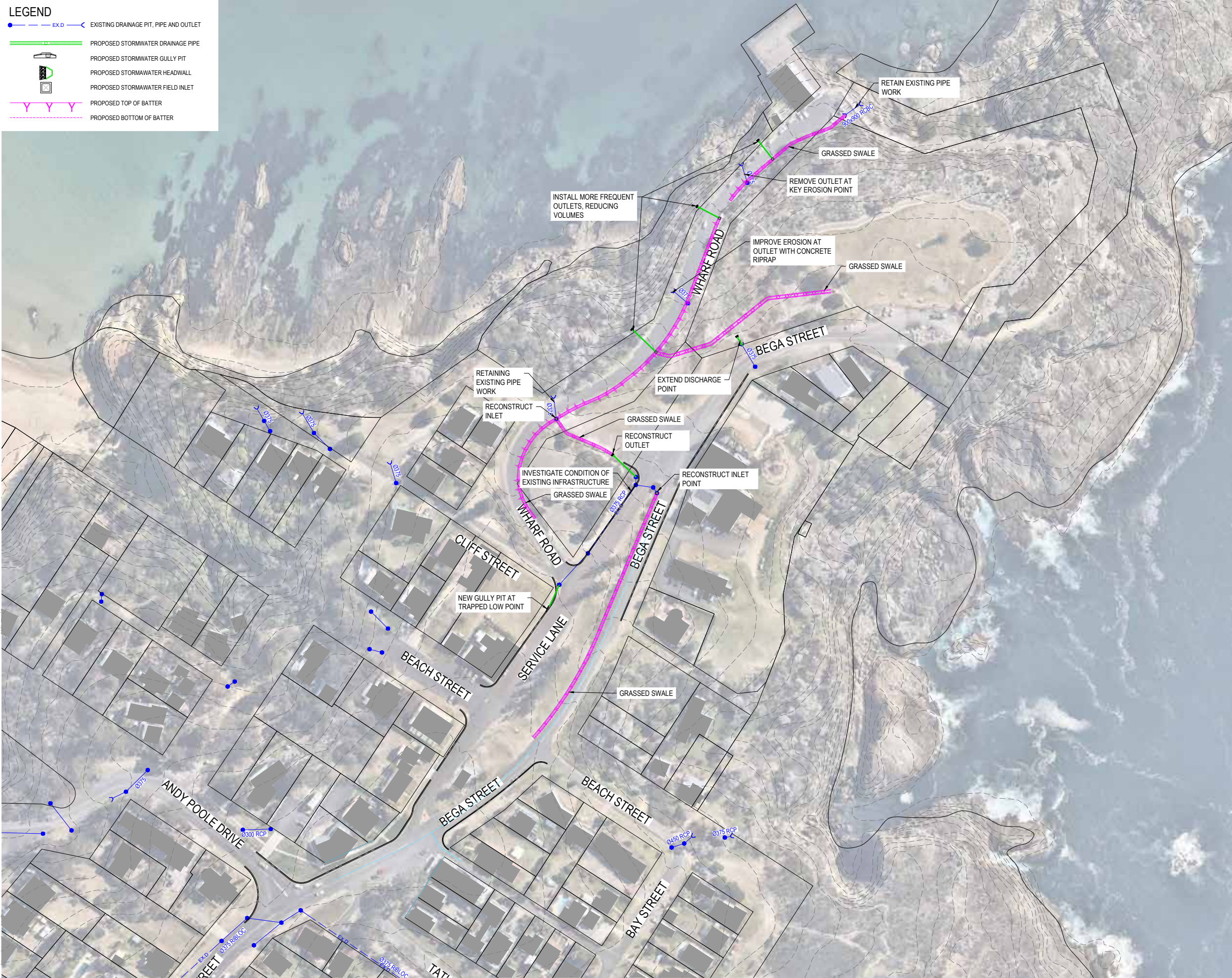
WAYFINDING

KEY MOVES

- 1. Wayfinding provides the opportunity to aid in telling the stories, histories significant moments and destinations of Tathra
- 2. Wayfinding will be located on high trafficable areas and will reference key destinations
- 3. Public art locations to include; yarning circle and the recycled timber at beach street shops



STORMWATER



SOUTH BEGA STREET



KEY MOVES

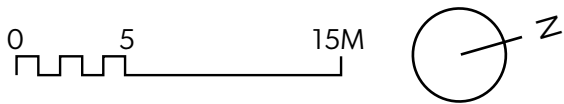
- Northbound traffic directed into Service Lane to simplify traffic movement at the intersection with Bega Street.
- The above key move will simplify the traffic circulation and remove the need for excessive signage and road markings – improving the sense of arrival into the headland.
- Provide a pedestrian island at Andy Poole Drive crossing to improve pedestrian safety.

LEGEND

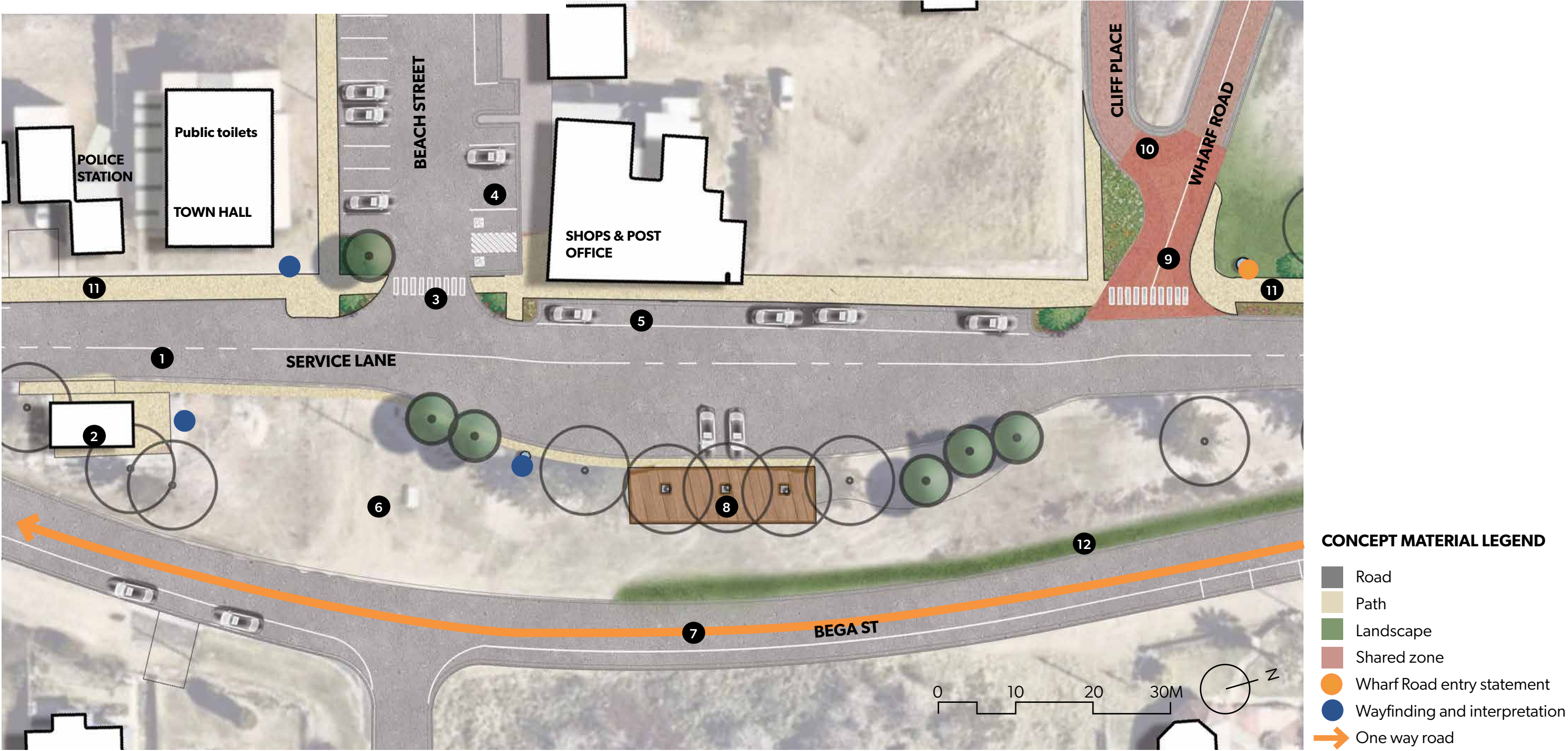
1. Service Lane entry
2. Service Lane exit
3. Existing supermarket driveway. Opportunity to upgrade subject to future requirements.
4. 3m wide shared path
5. Pedestrian island
6. Shared Path connection to lower Tathra
7. Connection to Davidson St footpath

CONCEPT MATERIAL LEGEND

- Road
- Path
- Landscape
- Grass verge
- Wayfinding and interpretation



BEACH STREET SHOPS



KEY MOVES

- A section of Bega Street is one way – to simplify traffic movement at two intersections with Service Lane.
- The addition of green space where part of Bega Street is reclaimed for swale storm water management.
- A 3 metre wide shared path that extends along shop frontage connecting the main destinations for walkers and recreational bike riders.
- Bike parking provided to encourage active travel.
- Recycled wharf timber used in place making – creating pleasant place to sit in park to encourage people to stop and stay at beach street shops.
- A raised threshold to mark the entry to Wharf Road – to provide a visual cue that will deter large vehicles from entering.
- Formalise Beach Street to include pedestrian crossing, accessible parking and loading zone.

LEGEND

- Retain two-way traffic on Service Lane.
- Memorial
- Upgrade Beach Street intersection with pedestrian priority.
- Formalise Beach Street parking including two accessible parking bays and loading zone
- No change to Service Lane parking in front of shops.
- Burial site with opportunity for Indigenous input and artistic interpretation.
- Bega Street one-way
- Upgrade park with a deck constructed from recycled wharf timber and picnic tables facing the ocean views.
- Wharf Street threshold including raised pavement, pedestrian crossing and entry sign.
- Modify Cliff Place intersection to improve safety.
- Shared path
- Grassed swale



Service Lane parkland with wide footpaths and decking situated around the pine trees to increase the opportunity for chance encounters and community gatherings.



Rain garden capture surface runoff.



Decking wrapped around existing trees.



Rolling sun lawn for recreation and rest.

TATHRA HOTEL



KEY MOVES

- Create a pedestrian and shared path network that connects to key destinations.
- Replace car park with a parkland that restores and interprets the local natural environment.

LEGEND

- 1. Shared path (3m wide)
 - 2. Path connecting to the beach trail
 - 3. Bega Street (one-way)
- 4. Bega Street to headland park (two-way)
 - 5. Formalised parking bays
 - 6. Pedestrian crossing
 - 7. Grassed Swale

TATHRA MEMORIAL GARDENS AND HEADLAND PARK



CONCEPT MATERIAL LEGEND

- Road
- Gravel
- Path
- Landscape
- Wayfinding
- Section line (refer to page 27)

KEY MOVES

- Create a large turning circle for large vehicles to improve safety
- Create a pedestrian and shared path network that connects to the key destinations.
- Increase the amount of formalised and accessible parking bays
- Provide bus/ long vehicle holding bay/ drop off
- Opportunity for Indigenous art and yarning circle
- Additional wayfinding signage

LEGEND

- 1. Shared path (3m)
- 2. Formalised parking bays
- 3. Two accessible parking bays
- 4. Bus/long vehicle holding bay/ drop off
- 5. Entry to headland walk
- 6. Memorial path to Wharf Road
- 7. Opportunity for local Indigenous art and yarning circle
- 8. Connection to Wharf-to-Wharf trail, specific signage, seating and bike parking

- 9. Relocated picnic tables with path access
- 10. Existing rock garden
- 11. Existing memorial park entry



Headland Park turning circle and way finding opportunities.



Use of natural materials to tie in with Tathra's surrounds.



Bike parking at walkway thresholds.

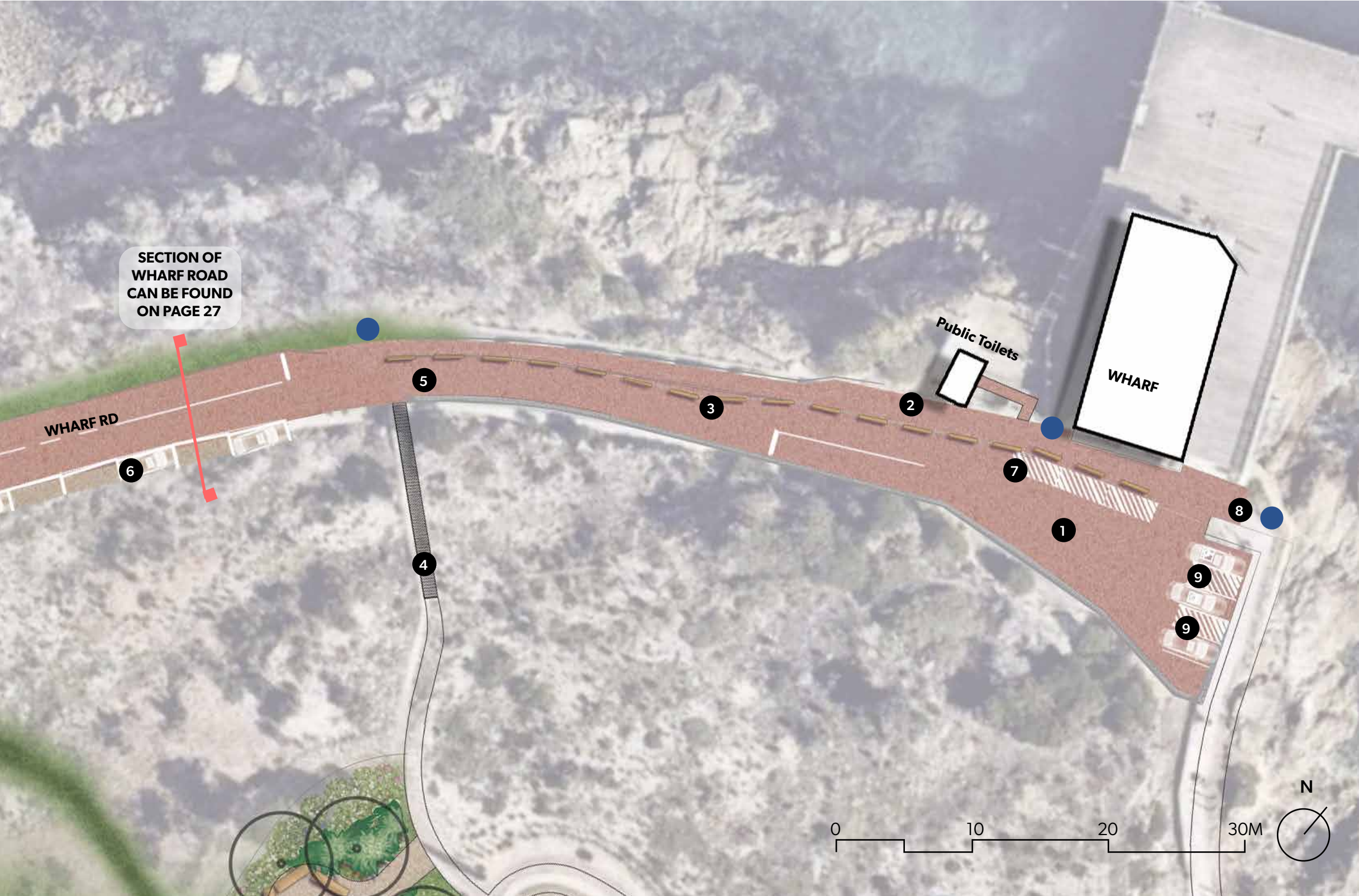


Gravel parking and soft colors to match the headlands natural and rugged aesthetic.

WHARF

KEY MOVES

- Wharf Road is transformed into a slow moving shared space for pedestrians, cyclists and vehicles.
- A shared zone along the wharf frontage becomes a forecourt improving pedestrian access and comfort to and from the wharf entry and linking the existing walkways. The forecourt is flush to the kerb to support mixed mobility access, events and enhance the wharf’s heritage setting.
- The road has been pulled away from both edges, requiring single lane access in some areas using traffic slowing methods. This will also provide a great shared space for all users to travel down to the Wharf.
- Vehicle access is maintained to the wharf with a drop off and pick up zone. Parking provided is reserved for disabled parking and permit holders only .
- New wide footpaths and fencing will be installed along the edge of the Wharf to take advantage of the pristine views.



LEGEND

- | | | |
|--|---|--|
| 1. Shared street with flush paved surface | 4. Path between Wharf Road and headland | 7. Pick up /loading/drop off with space for 4-5 vehicles |
| 2. Path with balustrade on cliff edge | 5. Narrow section of road with yield point to slow traffic. | 8. Entry to headland walk |
| 3. Recycled timber traffic barriers between path and shared street | 6. Formalised parallel parking | 9. Three (3) accessible parking bays |

CONCEPT MATERIAL LEGEND

- | | |
|--|---------------------------------|
| | Road |
| | Shared Zone |
| | Path |
| | Landscape |
| | Wayfinding and interpretation |
| | Section line (refer to page 27) |



Wharf Road is a pedestrian priority shared zone with flush surfaces to support mixed mobility and events.



Narrow section of road with yield point to slow traffic.



Materials match existing palette.



Opportunities for play and discovery elements.

MATERIAL PALETTE

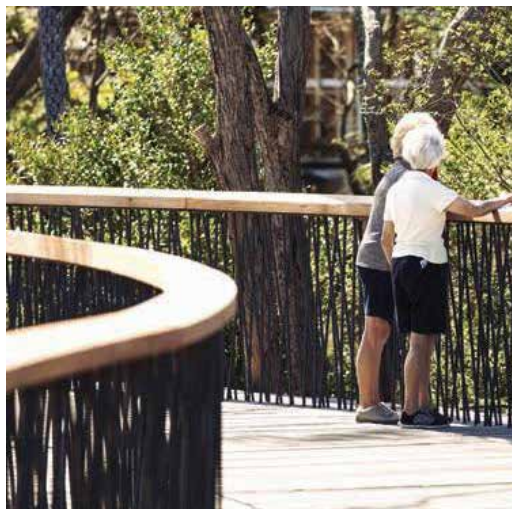
SURFACE MATERIAL



TIMBER



METAL



STONE



PLANTING PALETTE

SHRUBS



Banksia spinulosa 'Hairpin Banksia'



Eremophila deserti 'Dogwood'



Acacia brownii 'Heath Wattle'



Lasiopetalum baueri 'Slender Velvet'



Correa Alba 'White Correa'



Atriplex cinerea 'Coastal Salt Bush'



Banksia spinulosa 'Dwarf Honeyeater Delight'



Leucophyta brownii 'Cushion Bush'

MEADOW



Austrostipa ramosissima



Chrysocephalum 'Barbara's Sunshine'



Convolvulus erubescens 'Pink Bindleweed'



Themada triandra 'Kangaroo Grass'



Lepidosperma urophorum 'Tailed Sedge'



Austrostipa stipoides 'Coast Spear Grass'



Xerochrysum palustre 'Swamp Everlasting'



Orthrosanthus multiflorus 'Blue Hue'

GROUNDCOVER



Dichondra repens 'Kidney Weed'



Scaevola hooker 'Creeping Fan Flower'



Myoporum parvifolium 'Lime Carpet'



Eremophila debilis 'Creeping Emu Bush'



Grevillea nudiflora 'Flowered Grevillea'



Carpobrotus modestus 'Pig Face'



Sarcozona praecox 'Sarcozona'



Scaevola calendulace 'Dune Fan Flower'

RIPARIAN



Selliera radicans



Eleocharis atricha 'Tuber Spike-Rush'



Juncus prismatocarpus 'Branching Rush'



Pennisetum alopecuroides 'Fountain Grass'



Bolboschoenus medianus 'Marsh Club Rush'



Centipeda cunninghamii 'Old Man Weed'



Baloskion tetraphyllum 'Rope Rush'



Lepironia articulata 'Grey Sedge'

TREES



Brachychiton 'Kurrajong Tree'



Acacia melanoxylon 'Blackwood'



Casuarina glauca 'Swamp-Oak'



Leptospermum laevigatum Coastal Tea Tree'



Corymbia maculata 'Spotted Gum'

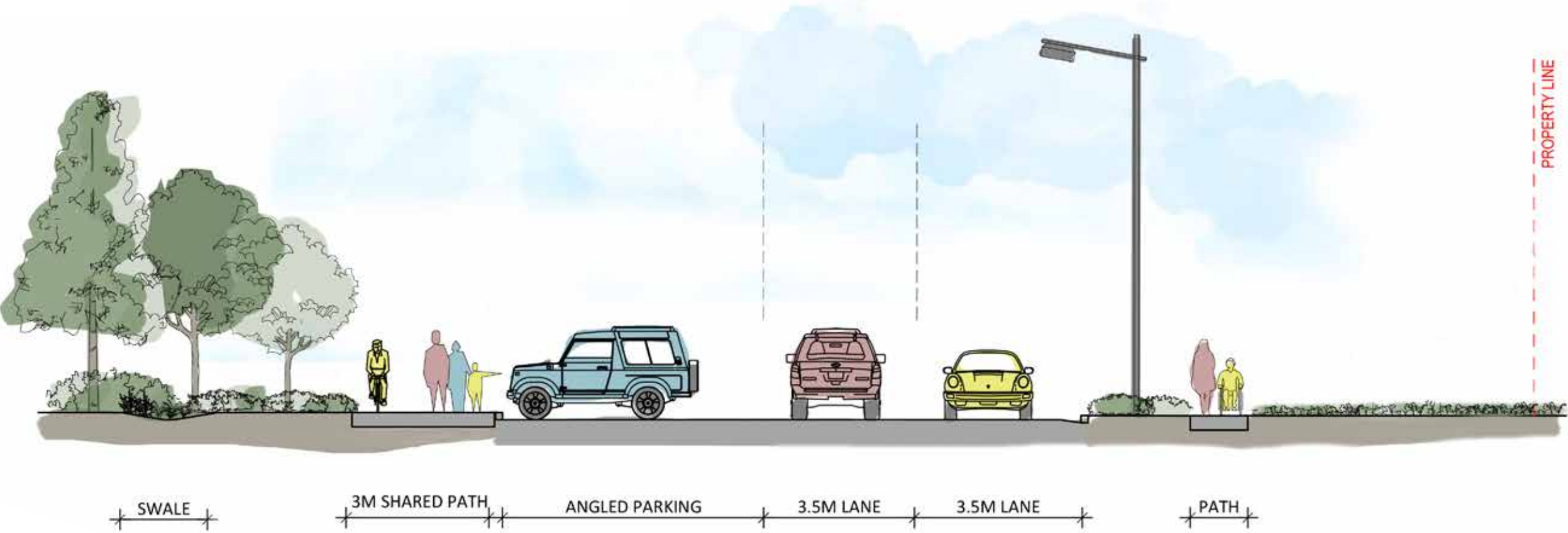


Buckinghamia celsissima 'Ivory Curls'

LEGEND - SOURCES FOR PLANTING PALETTE

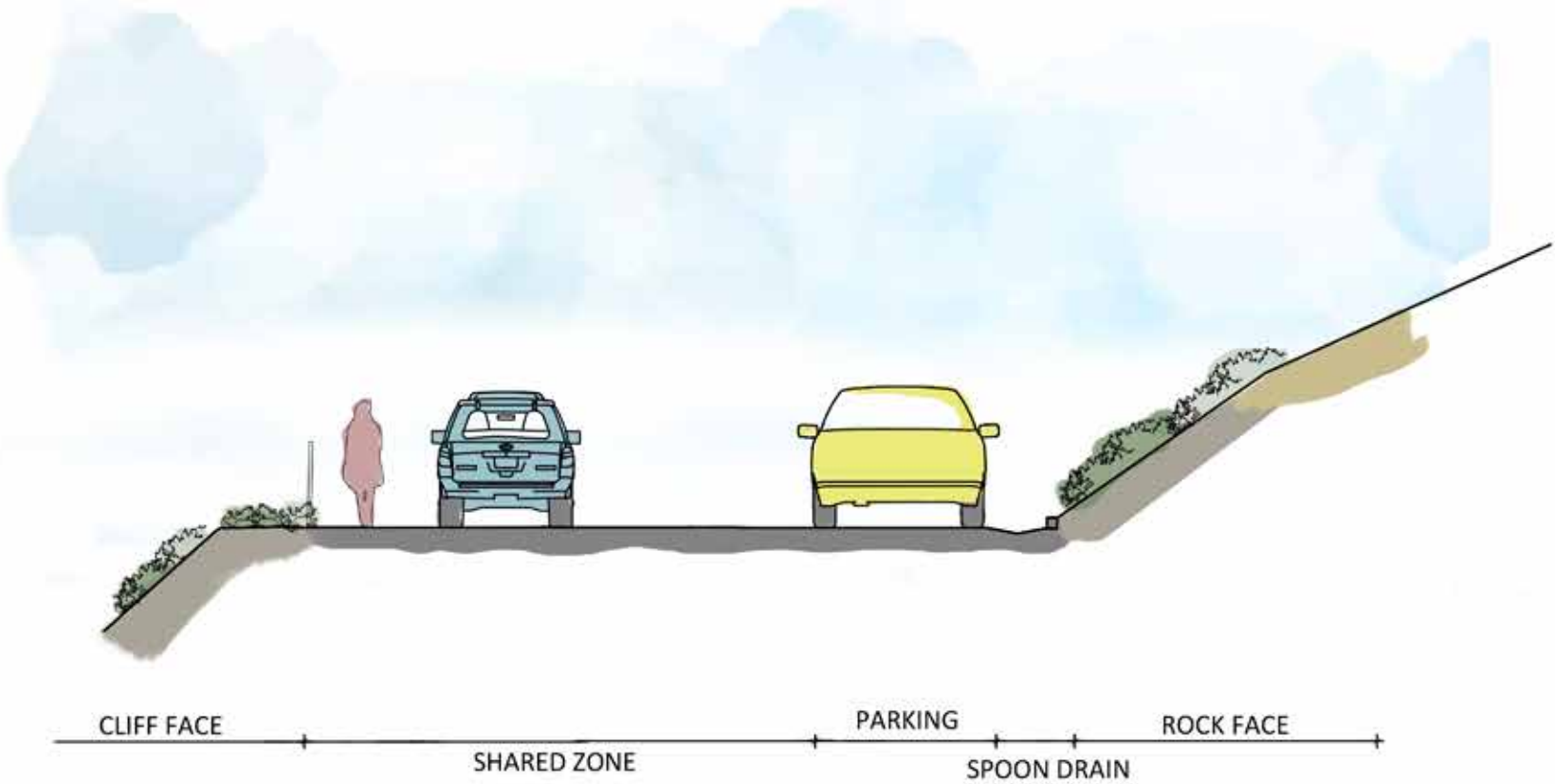
- Fire Proof Your Home - Regenerative Landscapes Australia
- Far South Coast - Conservation Management Plant Database
- Centre For Australian National Biodiversity Research (canbr)

TYPICAL SECTIONS



BEGA STREET (HEADLAND)

0 1m 5m
1:100



WHARF ROAD

0 1m 5m
1:100

